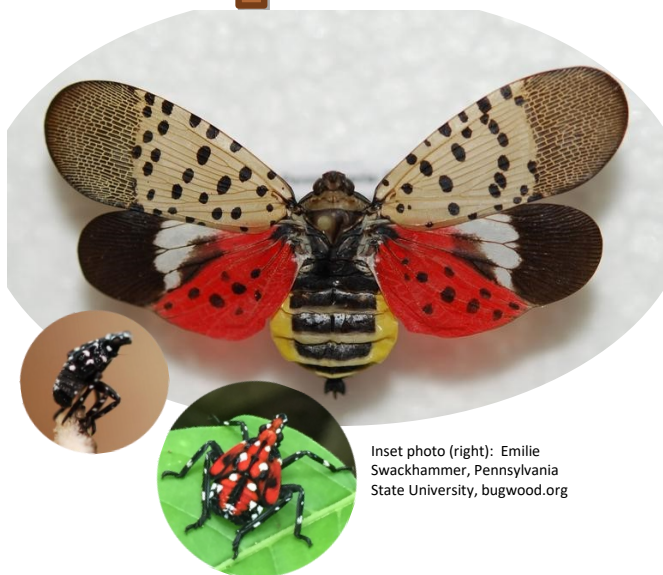


On the lookout for

Spotted Lanternfly



Inset photo (right): Emilie Swackhammer, Pennsylvania State University, bugwood.org

The spotted lanternfly (*Lycorma delicatula*) is an invasive plant pest that was introduced to the United States in 2014. It was found in Winchester, Virginia in January 2018.

A quarantine is now established but there may be populations outside of the quarantine area that have not yet been found.

It feeds on more than 70 different species of plants including the invasive tree-of-heaven (*Ailanthus altissima*). This insect is of interest to managers to contain new populations as early as possible.

What do I do if I find one?

- ◆ Try to capture it in a bag, jar or lidded container and store in the freezer.
- ◆ Take a few good pictures, noting the identifying features.
- ◆ Note the location where you may have seen the insect.
- ◆ Call Fairfax County Urban Forest Management Division at 703-324-1770, TTY 711 or email at pestmail@fairfaxcounty.gov
- ◆ An urban forester will reach out to you for more information.



All photos : Lawrence Barringer
Pennsylvania Dept of Agriculture,
bugwood.org

